

FORCE HAMMERS

RS400 SERIES

HYDRAULIC BREAKER

Technical Specification

TECHNICAL SPECIFICATION RS400

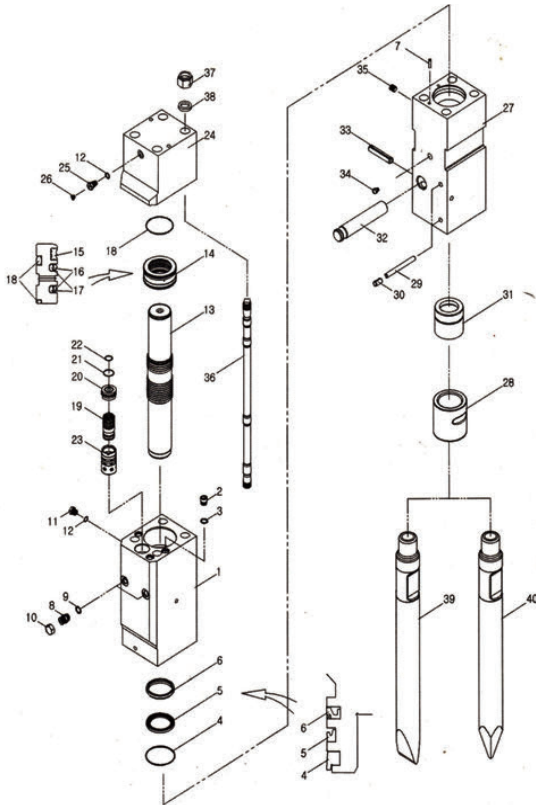
*Disclaimer: Please contact a Force representative for clarification on specifications and options. Force reserves the right to make changes to the information on this data sheet without prior notification to users.

Item/Model	Unit	RS400
Top Type Weight	kg	355
Box Type Weight	kg	363
Length	mm	1700
Pressure	bar	160-180
Flow	lpm	40-70
Rate	bmp	500-900
Hose	inch	1/2
Chisel	mm	68/70
Suit	ton	4-7



FORCE HAMMERS

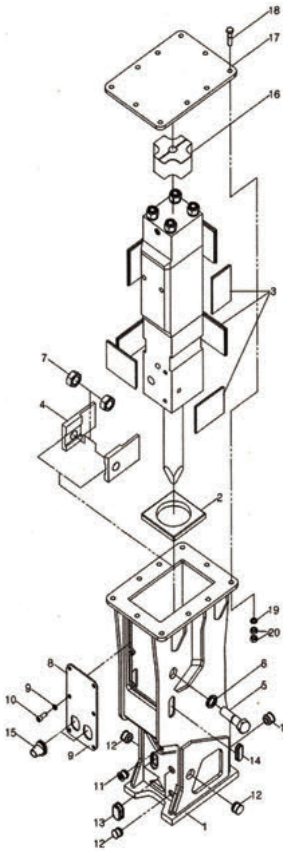
RS400 Main Body Ass'y



NO	PART NO	PART NAME	Q'YT	MEMO
		CYLINDER ASSY		
1	400M1102	CYLINDER	1	
2	400M1135	SOCKET PLUG	3	
3	OR045	O-RING	3	
4	DS004	DUST SEAL	1	
5	UP004	U-PACKING	1	
6	BS007	BUFFER SEAL	1	
7	400M1118	KNOCK PIN	1	
8	100M1125	MALE ADAPTER	2	
9	OR047	O-RING	2	
10	100M1125-1	UNION CAP	2	
11	100M1127	AIR CHECK VALVE	1	
12	OR046	O-RING	2	
13	400M1104	PISTON	1	
		SEAL RETAINER ASS'Y		
14	400M1108	SEAL RETAINER	1	
15	GS004	GAS SEAL	1	
16	SS004	STEP SEAL	2	
17	OR072	O-RING	2	
18	OR029	O-RING	3	
19	400M1106	VALVE	1	
20	400M1107	VALVE PLUG	1	
21	OR019	O-RING	1	
22	OR017	O-RING	1	
23	400M1105	VALVE SLEEVE	1	
		BACK HEAD ASS'Y		
24	400M1103	BACK HEAD	1	
25	100M1127	CHARGING VALVE	1	
26	100M1127-1	CHARGING VALVE PLUG	1	
		FRONT HEAD ASS'Y		
27	400M1101	FRONT HEAD	1	
28	400M1112	LOWER BUSH	1	
29	400M1120	STOP PIN	2	
30	SP1640	SPRING PIN	2	
31	00M1111	UPPER BUSH	1	
32	400M1119	ROD PIN	1	
33	SP1680	SPRING PIN	1	
34	100M1139	GREASE NIPPLE	1	
35	HHP1214	HOLLOW HEX PLUG	1	
36	400M1114	THROUGH BOLT	4	
37	400M1115	HEX NUT	4	
38	400M1117	WASHER	4	
39	400M1113	WEDGE CHISEL	1	
40	400M1113-1	MOIL POINT TOOL	1	

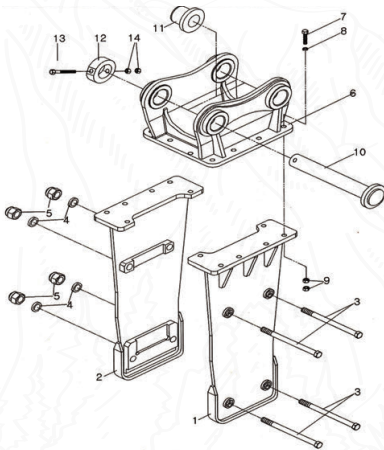
FORCE HAMMERS

RS400 Box Bracket



NO	PART NO	PART NAME	Q'YT	MEMO
		FRAME ASSY	1Set	
1	400M2101	FRAME	1	
2	400M2105	LOWER DAMPER	1	
3	100M2106-4	SIDE DAMPER	7	
4	400M2103	GUIDE PLATE	2	
5	HN243085	SIDE HEX BOLT	2	
6	SW24	SPRING WASHER	2	
7	HN2430	HEX NUT	2	
8	400M2109	COVER PLATE	1	
9	SW12	SPRING WASHER	6	
10	WB1217525	WRENCH BOLT	6	
11	PL007	GREASE PLUG	1	
12	PL003	STOP PIN PLUG	7	
13	PL012	ROD PIN PLUG	1	
14	PL015	ADAPTER PLUG	2	
15	PL019	IN/OUT PLUG	2	
16	400M2104	UPPER DAMPER	1	
17	400M2108	UPPER PLATE	1	
18	HB202580	HEX BOLT	10	
19	SW20	SPRING WASHER	10	
20	HN2025	HEX NUT	20	
21				

RS400 Top Bracket



NO	PART NO	PART NAME	Q'YT
		FRAME ASSY	
1	400M3101	FRAME-R	1
2	400M3101-1	FRAME-L	1
3	HB2720240	HEX BOLT	4
4	SW27	SPRING WASHER	4
5	CN2720	CAP NUT	4
6	400M3102	MOUNT CAP	1
7	HB202580	M/C HEX BOLT	12

NO	PART NO	PART NAME	Q'YT
8	SW20	M/C SPRING WASHER	12
9	HN2025	M/C HEX NUT	24
10	400M3106	PIN	2
11	400M3106-1	T-BUSH	4
12	400M3106-2	STOP BAR	2
13	HB12175110	PIN HEX BOLT	2
14	HN12175	PIN HEX NUT	4

FORCE HAMMERS PTY LTD.

📍 Address 64 Buckingham Drive, WANGARA, ABN 85 676555990
Mail PO Box 988, Joondalup DC, Perth Western Australia 6065

☎ 1300 820 603