

FORCE HAMMERS

RS1900 SERIES

HYDRAULIC BREAKER

Technical Specification

TECHNICAL SPECIFICATION RS1900

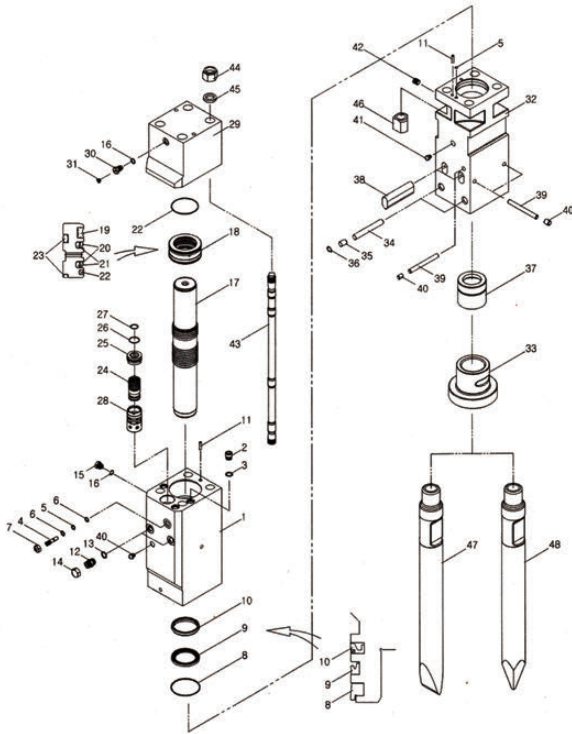
*Disclaimer: Please contact a Force representative for clarification on specifications and options. Force reserves the right to make changes to the information on this data sheet without prior notification to users.

Item/Model	Unit	RS1900
Top Type Weight	kg	1970
Box Type Weight	kg	2050
Length	mm	2860
Pressure	bar	200-240
Flow	lpm	160-200
Rate	bmp	400-600
Hose	inch	1
Chisel	mm	140
Suit	ton	26-19



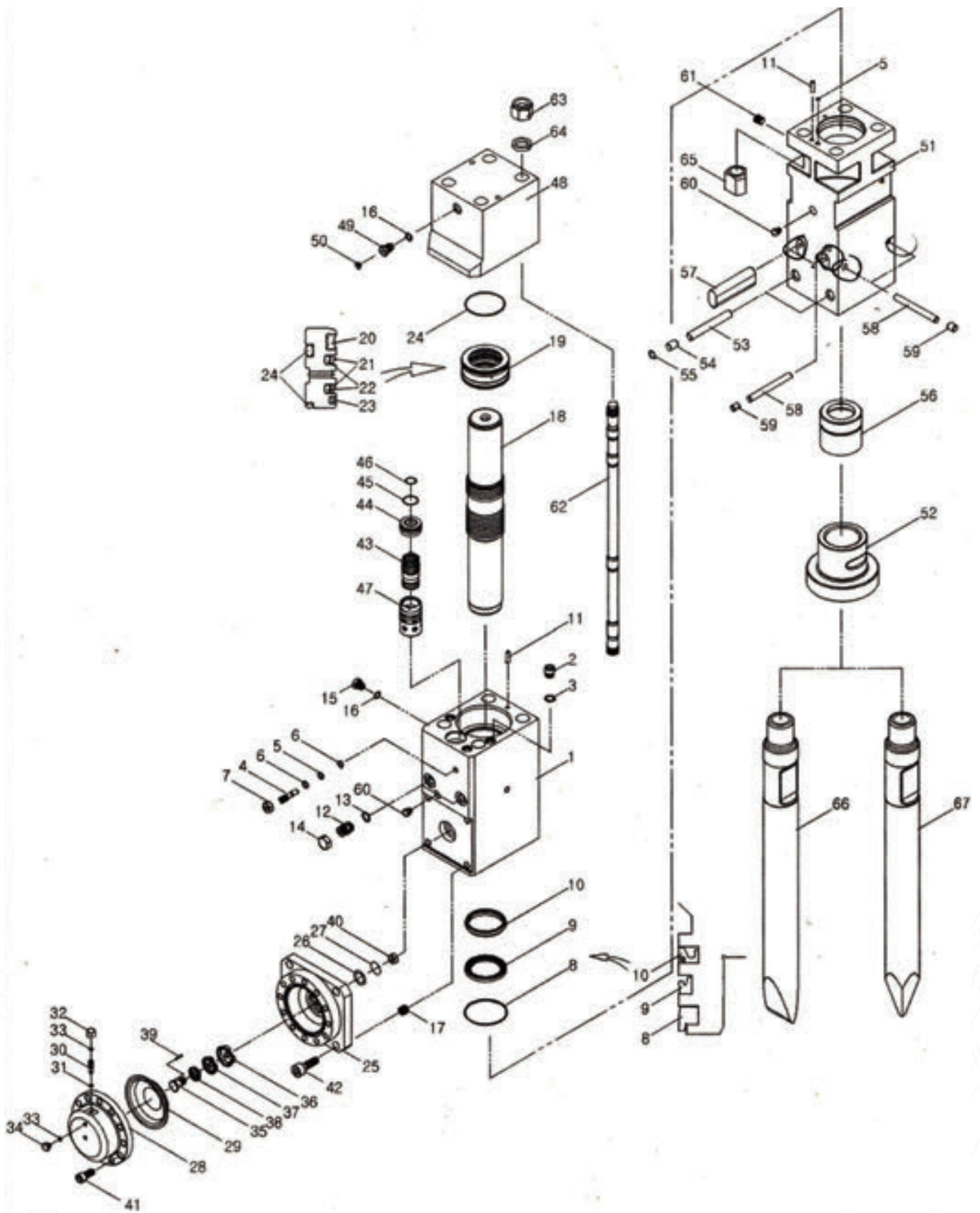
FORCE HAMMERS

RS1900 Main Body Ass'y



NO	PART NO	PART NAME	Q'YT	MEMO
		CYLINDER ASSY		
1	810M1102	CYLINDER	1	
2	810M1135	SOCKET PLUG	3	
3	OR051	O-RING	3	
4	710M1124	VALVE ADJUSTER	1	
5	OR042	O-RING	1	
6	BR002	BACK UP RING	2	
7	HN1815	HEX NUT	1	
8	DS012	DUST SEAL	1	
9	UP012	U-PACKING	1	
10	BS014	BUFFER SEAL	1	
11	400M1118	KNOCK PIN	2	
12	600M1125	MALE ADAPTER	2	
13	OR053	O-RING	2	
14	600M1125-1	UNION CAP	2	
15	100M1127	AIR CHECK VALVE	1	
16	OR046	O-RING	2	
17	810M1104	PISTON	1	
		SEAL RETAINER ASS'Y		
18	810M1108	SEAL RETAINER	1	
19	GS012	GAS SEAL	1	
20	SS011	STEP SEAL	2	
21	OR079	O-RING	2	
22	OR034	O-RING	3	
23	BR004	BUFFER RING	1	
24	810M1106	VALVE	1	
25	810M1107	VALVE PLUG	1	
26	OR025	O-RING	1	
27	OR022	O-RING	1	
28	810M1105	VALVE SLEEVE	1	
		BACK HEAD ASS'Y		
29	810M1103	BACK HEAD	1	
30	100M1127	CHARGING VALVE	1	
31	100M1127-1	CHARGING VALVE PLUG	1	
		FRONT HEAD ASS'Y		
32	810M1101	FRONT HEAD	1	
33	810M1112	LOWER BUSH	1	
	810M1112-B	LOWER BUSH (BOX TYPE)	1	
34	810M1120	STOP PIN-L	2	
35	RP006	RUBBER PLUG-L	2	
36	SR030	SNAP RING	2	
37	810M1111	UPPER BUSH	1	
38	380F1119	ROD PIN	2	
39	280F1121	STOP PIN-UR	3	
40	RP002	RUBBER PLUG-UR	3	
41	100M1139	GREASE NIPPLE	2	
42	HHP1214	HOLLOW HEX PLUG	1	
43	810M1114	THROUGH BOLT	4	
44	810M1115	HEX NUT	4	
45	810M1117	WASHER	4	
46	810M1116	ROUND NUT	4	
47	810M1113	WEDGE CHISEL	1	
48	810M1113-1	MOIL POINT TOOL	1	

RS1900 Main Body Ass'y



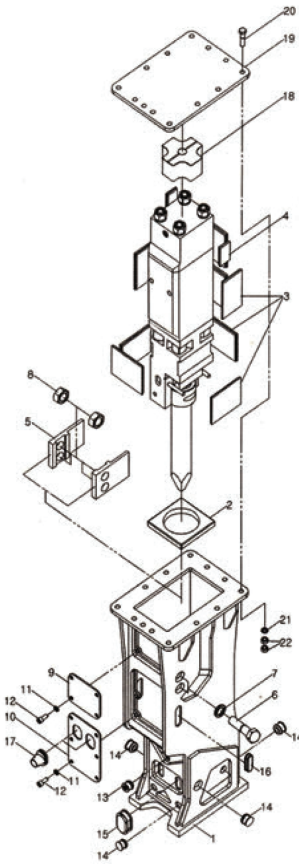
FORCE HAMMERS

NO	PART NO	PART NAME	Q'YT
		CYLINDER ASS'Y	
1	810MA1102	CYLINDER	1
2	810M1135	SOCKET PLUG	3
3	OR051	O-RING	3
4	710M1124	VALVE ADJUSTER	1
5	OR042	O-RING	1
6	BR002	BACK UP RING	2
7	HN1815	HEX NUT	1
8	DS012	DUST SEAL	1
9	UP012	U-PACKING	1
10	BS014	BUFFER SEAL	1
11	400M1118	KNOCK PIN	2
12	600M1125	MALE ADAPTER	2
13	OR029	O-RING	2
14	600M1125-1	UNION CAP	2
15	100M1127	AIR CHECK VALVE	1
16	OR046	O-RING	2
17	HC243015	HELI SERT COIL	4
18	810M1104	PISTON	1
		SEAL RETAINER ASS'Y	
19	810M1108	SEAL RETAINER	1
20	GS012	GAS SEAL	1
21	SS011	STEP SEAL	2
22	OR079	O-RING	2
23	BR004	BUFFER RING	1
24	OR034	O-RING	3
		ACCUMULATOR ASS'Y	
25	280F1109	ACCUMULATOR BODY	1
26	OR026	O-RING	1
27	BR021	BACK UP RING	1
28	280F1110	ACCUMULATOR COVER	1
29	280F1128-1	DIAPHRAGM	1
30	280F1128-2	ACC CHARGING VALVE	1
31	OR001	O-RING	1
32	180F1128-3	ACC CHARGING VALVE CAP	1
33	OR044	O-RING	2
34	180F1128-4	CHARGING PLUG	1
35	180F1128-8	HOLDER PIN	1
36	180F1128-5	HOLDER-A	1
37	180F1128-6	HOLDER-B	1
38	180F1128-7	HOLDER-C	1
39	180F1128-9	CENTER PIN	1
40	180F1128-10	HOLDER NUT	1
41	WB181550	SOCKET BOLT	12
42	WB-243065	SOCKET BOLT	4
43	810M1106	VALVE	1
44	810M1107	VALVE PLUG	1
45	OR025	O-RING	1
46	OR022	O-RING	1
47	810M1105	VALVE SLEEVE	1

NO	PART NO	PART NAME	Q'YT
		BACK HEAD ASS'Y	
48	810M1103	BACK HEAD	1
49	100M1127	CHARGING VALVE	1
50	100M1127-1	CHARGING VALVE PLUG	1
		FRONT HEAD ASS'Y	
51	810M1101	FRONT HEAD	1
52	810M1112	LOWER BUSH	1
	810M1112-B	LOWER BUSH (BOX TYPE)	1
53	810M1120	STOP PIN-L	2
54	RP006	RUBBER PLUG-L	2
55	SR030	SNAP RING	2
56	810M1111	UPPER BUSH	1
57	380F1119	ROD PIN	2
58	280F1121	STOP PIN-UR	3
59	RP002	RUBBER PLUG-UR	3
60	100M1139	GREASE NIPPLE	2
61	HHP1214	HOLLOW HEX PLUG	1
62	810M1114	THROUGH BOLT	4
63	810M1115	HEX NUT	4
64	810M1117	WASHER	4
65	810M1116	ROUND NUT	4
66	810M1113	WEDGE CHISEL	1
67	810M1113-1	MOIL POINT TOOL	1

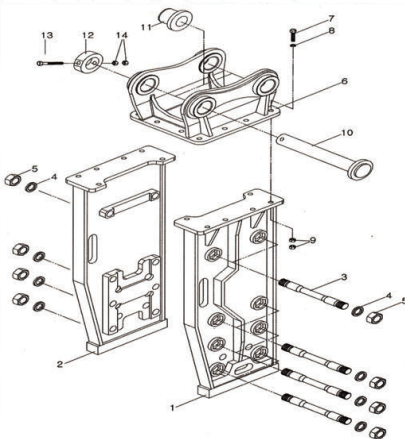
FORCE HAMMERS

RS1900 Box Bracket



NO	PART NO	PART NAME	Q'YT	MEMO
		FRAME ASSY	1Set	
1	810M2101	FRAME	1	
2	810M2105	LOWER DAMPER	1	
3	180F2106	SIDE DAMPER-A	8	
4	100M2106-4	SIDE DAMPER-B	2	
5	810M2103	GUIDE PLATE	2	
6	HB3640100	SIDE HEX BOLT	4	
7	SW36	SPRING WASHER	4	
8	HN3640	HEX NUT	4	
9	810M2109	COVER PLATE-A	1	
10	810M2109-1	COVER PLATE-B	1	
11	SW16	SPRING WASHER	10	
12	WB162030	WRENCH BOLT	10	
13	PL009	GREASE PLUG	1	
14	PL008	STOP PIN PLUG	10	
15	PL014	ROD PIN PLUG	2	
16	PL018	ADAPTER PLUG	2	
17	PL021	IN/OUT PLUG	2	
18	810M2104	UPPER DAMPER	1	
19	810M2109	UPPER PLATE	1	
20	HB2430110	HEX BOLT	12	
21	SW24	SPRING WASHER	12	
22	HN2430	HEX NUT	24	

RS1900 Top Bracket



NO	PART NO	PART NAME	Q'YT
		FRAME ASS'Y	
1	810M3101	FRAME-R	1
2	810M3101-1	FRAME-L	1
3	280F3103	SIDE BOLT	8
4	280F3105	WASHER	8
5	280F3104	SIDE NUT	16
6	280F3102	MOUNT CAP	1
7	HB2430110	M/C HEX BOLT	12

NO	PART NO	PART NAME	Q'YT
8	SW24	M/C SPRING	12
		WASHER	
9	HN2430	M/C HEX NUT	24
10	810M3106	PIN	2
11	810M3106-1	T-BUSH	4
12	810M3106-2	STOP BAR	2
13	HB1620180	PIN HEX BOLT	2
14	HN1620	PIN HEX NUT	4

FORCE HAMMERS PTY LTD.

📍 Address 64 Buckingham Drive, WANGARA, ABN 85 676555990
Mail PO Box 988, Joondalup DC, Perth Western Australia 6065

☎ 1300 820 603