

# FORCE HAMMERS

## RS1600 SERIES

### HYDRAULIC BREAKER

#### Technical Specification

#### TECHNICAL SPECIFICATION RS1600

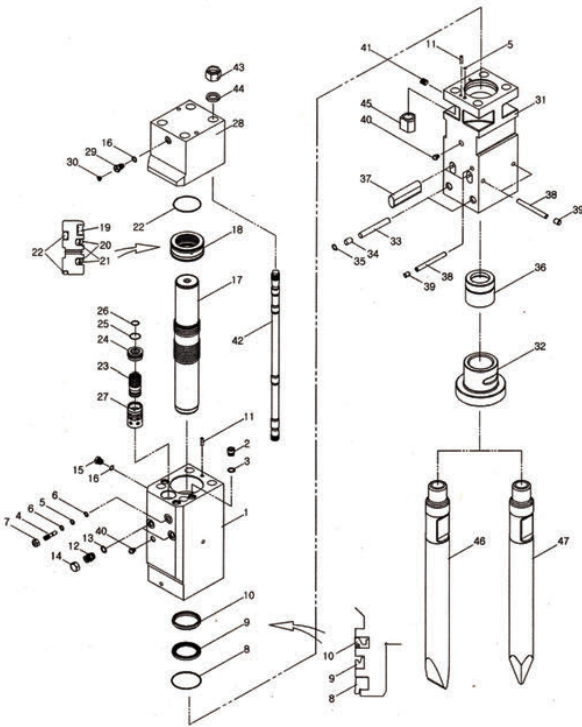
\*Disclaimer: Please contact a Force representative for clarification on specifications and options. Force reserves the right to make changes to the information on this data sheet without prior notification to users.

Item/Model	Unit	RS1600
Top Type Weight	kg	1800
Box Type Weight	kg	1950
Length	mm	2700
Pressure	bar	200-240
Flow	lpm	160-200
Rate	bmp	400-700
Hose	inch	1
Chisel	mm	135
Suit	ton	19-26



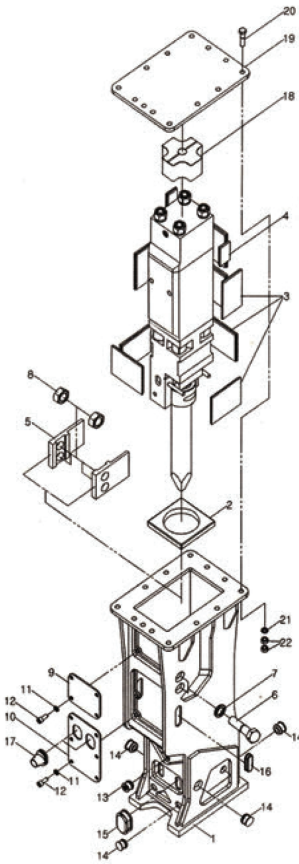
# FORCE HAMMERS

## RS1600 Main Body Ass'y



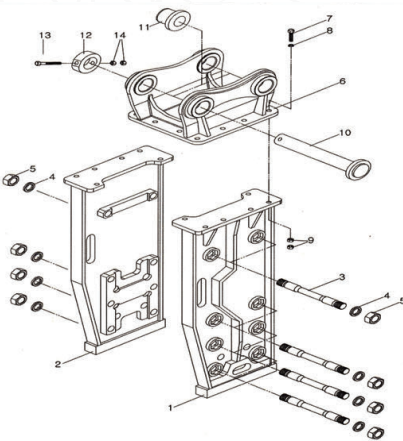
NO	PART NO	PART NAME	Q'YT	MEMO
		CYLINDER ASS'Y		
1	710M1102	CYLINDER	1	
2	600M1135	SOCKET PLUG	3	
3	OR049	O-RING	3	
4	710M1124	VALVE ADJUSTER	1	
5	OR042	O-RING	1	
6	BR002	BACK UP RING	2	
7	HN1815	HEX NUT	1	
8	DS010	DUST SEAL	1	
9	UP011	U-PACKING	1	
10	BS013	BUFFER SEAL	1	
11	600M1118	KNOCK PIN	2	
12	600M1125	MALE ADAPTER	2	
13	OR053	O-RING	2	
14	600M1125-1	UNION CAP	2	
15	100M1127	AIR CHECK VALVE	1	
16	OR046	O-RING	2	
17	710M1104	PISTON	1	
		SEAL RETAINER ASS'Y		
18	710M1108	SEAL RETAINER	1	
19	GS010	GAS SEAL	1	
20	SS009	STEP SEAL	2	
21	OR077	O-RING	2	
22	OR033	O-RING	3	
23	710M1106	VALVE	1	
24	710M1107	VALVE PLUG	1	
25	OR024	O-RING	1	
26	OR021	O-RING	1	
27	710M1105	VALVE SLEEVE	1	
		BACK HEAD ASS'Y		
28	710M1103	BACK HEAD	1	
29	100M1127	CHARGING VALVE	1	
30	100M1127-1	CHARGING VALVE PLUG	1	
		FRONT HEAD ASS'Y		
31	710M1101	FRONT HEAD	1	
32	710M1112	LOWER BUSH	1	
	710M1112-B	LOWER BUSH (BOX TYPE)	1	
33	710M1120	STOP PIN-L	2	
34	RP004	RUBBER PLUG-L	2	
35	SR026	SNAP RING	2	
36	710M1111	UPPER BUSH	1	
37	710M1119	ROD PIN	2	
38	710M1121	STOP PIN-UR	3	
39	RP001	RUBBER PLUG-UR	3	
40	100M1139	GREASE NIPPLE	2	
41	HHP1214	HOLLOW HEX PLUG	1	
42	710M1114	THROUGH BOLT	4	
43	710M1115	HEX NUT	4	
44	710M1117	WASHER	4	
45	710M1116	ROUND NUT	4	
46	710M1113	WEDGE CHISEL	1	
47	710M1113-1	MOIL POINT TOOL	1	

## RS1600 Box Bracket



NO	PART NO	PART NAME	Q'YT	MEMO
		FRAME ASSY	1Set	
1	710M2101	FRAME	1	
2	710M2105	LOWER DAMPER	1	
3	180F2106	SIDE DAMPER-A	8	
4	100M2106-4	SIDE DAMPER-B	2	
5	710M2103	GUIDE PLATE	2	
6	HB3640100	SIDE HEX BOLT	4	
7	SW36	SPRING WASHER	4	
8	HN3640	HEX NUT	4	
9	710M2109	COVER PLATE-A	1	
10	710M2109-1	COVER PLATE-B	1	
11	SW16	SPRING WASHER	10	
12	WB162030	WRENCH BOLT	10	
13	PL009	GREASE PLUG	1	
14	PL008	STOP PIN PLUG	10	
15	PL012	ROD PIN PLUG	2	
16	PL018	ADAPTER PLUG	2	
17	PL021	IN/OUT PLUG	2	
18	710M2104	UPPER DAMPER	1	
19	710M2109	UPPER PLATE	1	
20	HB2430110	HEX BOLT	12	
21	SW24	SPRING WASHER	12	
22	HN2430	HEX NUT	24	

## RS1600 Top Bracket



NO	PART NO	PART NAME	Q'YT
		FRAME ASSY	
1	710M3101	FRAME-R	1
2	710M3101-1	FRAME-L	1
3	280F3103	SIDE BOLT	8
4	280F3105	WASHER	8
5	280F3104	SIDE NUT	16
6	280F3102	MOUNT CAP	1
7	HB2430110	M/C HEX BOLT	12

NO	PART NO	PART NAME	Q'YT
8	SW24	M/C SPRING WASHER	12
9	HN2430	M/C HEX NUT	24
10	710M3106	PIN	2
11	710M3106-1	T-BUSH	4
12	710M3106-2	STOP BAR	2
13	HB1620180	PIN HEX BOLT	2
14	HN1620	PIN HEX NUT	4

## FORCE HAMMERS PTY LTD.

📍 Address 64 Buckingham Drive, WANGARA, ABN 85 676555990  
Mail PO Box 988, Joondalup DC, Perth Western Australia 6065

☎ 1300 820 603