

# FORCE HAMMERS

## RS600 SERIES

### HYDRAULIC BREAKER

#### Technical Specification

#### TECHNICAL SPECIFICATION RS600

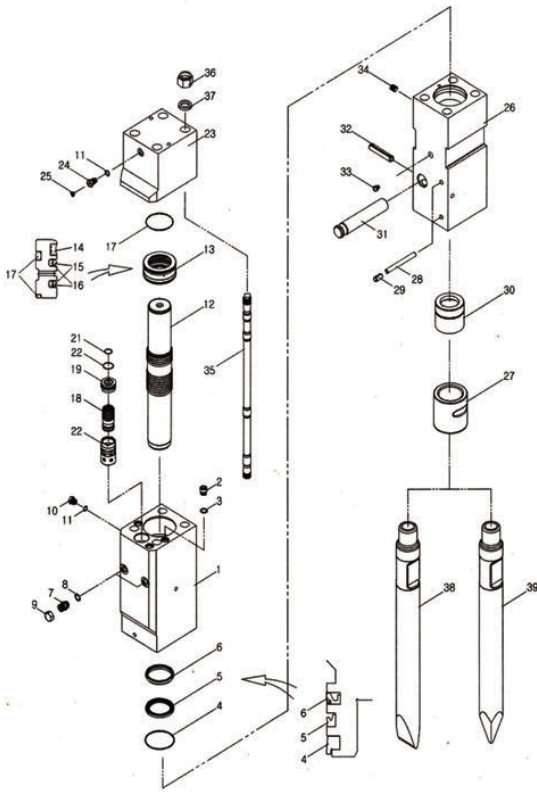
\*Disclaimer: Please contact a Force representative for clarification on specifications and options. Force reserves the right to make changes to the information on this data sheet without prior notification to users.

Item/Model	Unit	RS600
Top Type Weight	kg	440
Box Type Weight	kg	450
Length	mm	1750
Pressure	bar	160-180
Flow	lpm	50-90
Rate	bmp	500-800
Hose	inch	1/2
Chisel	mm	75
Suit	ton	6-9



# FORCE HAMMERS

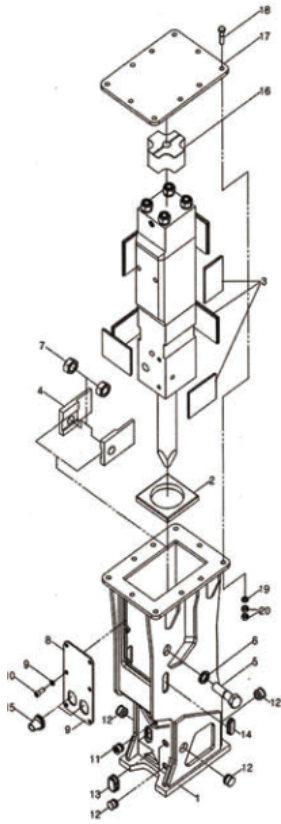
## RS600 Main Body Ass'y



NO	PART NO	PART NAME	Q'YT	MEMO
		CYLINDER ASSY		
1	430M1102	CYLINDER	1	
2	400M1135	SOCKET PLUG	3	
3	OR045	O-RING	3	
4	DS005	DUST SEAL	1	
5	UP005	U-PACKING	1	
6	BS008	BUFFER SEAL	1	
7	100M1125	MALE ADAPTER	2	
8	OR047	O-RING	2	
9	100M1125-1	UNION CAP	2	
10	100M1127	AIR CHECK VALVE	1	
11	OR046	O-RING	2	
12	430M1104	PISTON	1	
		SEAL RETAINER ASS'Y		
13	430M1108	SEAL RETAINER	1	
14	GS005	GAS SEAL	1	
15	SS005	STEP SEAL	2	
16	OR073	O-RING	2	
17	OR029	O-RING	3	
18	430M1106	VALVE	1	
19	430M1107	VALVE PLUG	1	
20	OR019	O-RING	1	
21	OR017	O-RING	1	
22	430M1105	VALVE SLEEVE	1	
		BACK HEAD ASSY		
23	430M1103	BACK HEAD	1	
24	100M1127	CHARGING VALVE	1	
25	100M1127-1	CHARGING VALVE PLUG	1	
		FRONT HEAD ASS'Y		
26	430M1101	FRONT HEAD	1	
27	430M1112	LOWER BUSH	1	
28	400M1120	STOP PIN	2	
29	SP1640	SPRING PIN	2	
30	430M1111	UPPER BUSH	1	
31	430M1119	ROD PIN	1	
32	SP1680	SPRING PIN	1	
33	100M1139	GREASE NIPPLE	1	
34	HHP1214	HOLLOW HEX PLUG	1	
35	430M1114	THROUGH BOLT	4	
36	430M1115	HEX NUT	4	
37	430M1117	WASHER	4	
38	430M1113	WEDGE CHISEL	1	
39	430M1113-1	MOIL POINT TOOL	1	

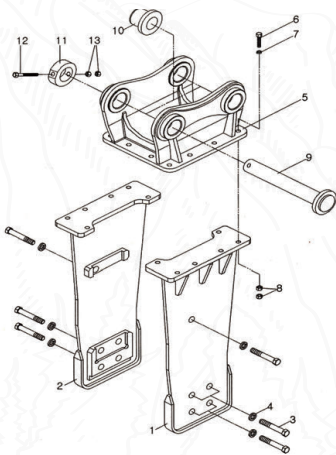
# FORCE HAMMERS

## RS600 Box Bracket



NO	PART NO	PART NAME	Q'YT	MEMO
		FRAME ASSY	1Set	
1	430M2101	FRAME	1	
2	430M2105	LOWER DAMPER	1	
3	100M2106-4	SIDE DAMPER	7	
4	400M2103	GUIDE PLATE	2	
5	HB243085	SIDE HEX BOLT	2	
6	SW24	SPRING WASHER	2	
7	HN2430	HEX NUT	2	
8	430M2109	COVER PLATE	1	
9	SW12	SPRING WASHER	6	
10	WB1217525	WRENCH BOLT	6	
11	PL007	GREASE PLUG	1	
12	PL003	STOP PIN PLUG	7	
13	PL012	ROD PIN PLUG	1	
14	PL015	ADAPTER PLUG	2	
15	PL019	IN/OUT PLUG	2	
16	400M2105	UPPER DAMPER	1	
17	430M2108	UPPER PLATE	1	
18	HB202580	HEX BOLT	10	
19	SW20	SPRING WASHER	10	
20	HN2025	HEX NUT	20	

## RS600 Top Bracket



NO	PART NO	PART NAME	Q'YT
		FRAME ASSY	
1	430M3101	FRAME-R	1
2	430M3101-1	FRAME-L	1
3	HB273080	HEX BOLT	4
4	SW27	SPRING WASHER	4
5	430M3102	MOUNT CAP	4
6	HB202580	M/C HEX BOLT	1
7	SW20	M/C SPRING WASHER	12

NO	PART NO	PART NAME	Q'YT
8	HN2025	M/C HEX NUT	24
9	430M3106	PIN	2
10	430M3106-1	T-BUSH	4
11	430M3106-2	STOP BAR	2
12	HB12175110	PIN HEX BOLT	2
13	HN12175	PIN HEX NUT	4

## FORCE HAMMERS PTY LTD.

Address 64 Buckingham Drive, WANGARA, ABN 85 676555990  
Mail PO Box 988, Joondalup DC, Perth Western Australia 6065

1300 820 603