

FORCE HAMMERS

RS900 SERIES

HYDRAULIC BREAKER

Technical Specification

TECHNICAL SPECIFICATION RS900

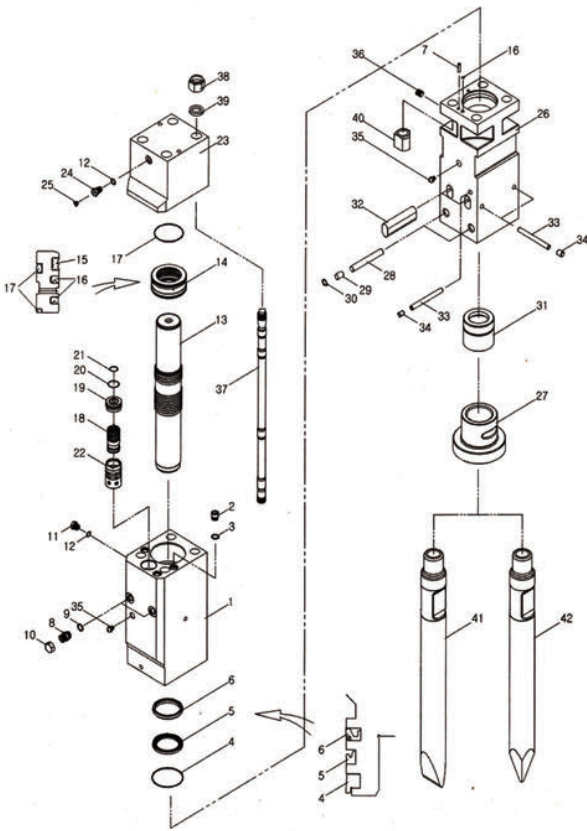
*Disclaimer: Please contact a Force representative for clarification on specifications and options. Force reserves the right to make changes to the information on this data sheet without prior notification to users.

Item/Model	Unit	RS900
Top Type Weight	kg	900
Box Type Weight	kg	970
Length	mm	2400
Pressure	bar	160-180
Flow	lpm	80-120
Rate	bmp	400-700
Hose	inch	3/4
Chisel	mm	100
Suit	ton	11-16



FORCE HAMMERS

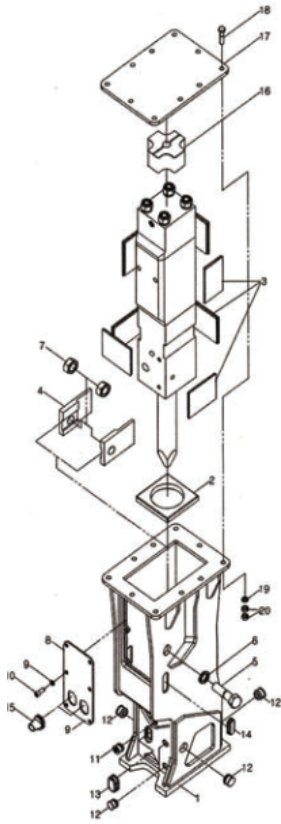
RS900 Main Body Ass'y



NO	PART NO	PART NAME	Q'YT	MEMO
		CYLINDER ASS'Y		
1	500M1102	CYLINDER	1	
2	500M1135	SOCKET PLUG	3	
3	OR048	O-RING	3	
4	DS007	DUST SEAL	1	
5	UP008	U-PACKING	1	
6	BS010	BUFFER SEAL	1	
7	400M1118	KNOCK PIN	1	
8	450M1125	MALE ADAPTER	2	
9	OR050	O-RING	2	
10	450M1125-1	UNION CAP	2	
11	100M1127	AIR CHECK VALVE	1	
12	OR046	O-RING	2	
13	500M1104	PISTON	1	
		SEAL RETAINER ASS'Y		
14	500M1108	SEAL RETAINER	1	
15	GS007	GAS SEAL	1	
16	UP007	U-PACKING	2	
17	OR031	O-RING	3	
18	500M1106	VALVE	1	
19	500M1107	VALVE PLUG	1	
20	OR059	O-RING	1	
21	OR018	O-RING	1	
22	500M1105	VALVE SLEEVE	1	
		BACK HEAD ASS'Y		
23	500M1103	BACK HEAD	1	
24	100M1127	CHARGING VALVE	1	
25	100M1127-1	CHARGING VALVE PLUG	1	
		FRONT HEAD ASS'Y		
26	500M1101	FRONT HEAD	1	
27	500M1112	LOWER BUSH	1	
	500M1112-B	LOWER BUSH (BOX TYPE)	1	
28	500M1120	STOP PIN-L	2	
29	RP004	RUBBER PLUG-L	2	
30	SR026	SNAP RING	2	
31	500M1111	UPPER BUSH	1	
32	500M1119	ROD PIN	2	
33	500M1121	STOP PIN-UR	3	
34	RP001	RUBBER PLUG-UR	3	
35	100M1139	GREASE NIPPLE	2	
36	HHP1214	HOLLOW HEX PLUG	1	
37	500M1114	THROUGH BOLT	4	
38	500M1115	HEX NUT	4	
39	500M1117	WASHER	4	
40	500M1116	ROUND NUT	4	
41	500M1113	WEDGE CHISEL	1	
42	500M1113-1	MOIL POINT TOOL	1	

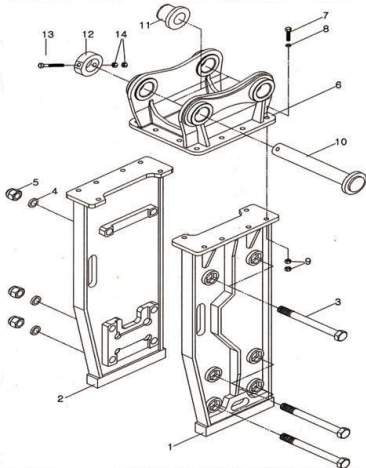
FORCE HAMMERS

RS900 Box Bracket



NO	PART NO	PART NAME	Q'YT	MEMO
		FRAME ASSY	1Set	
1	500M2101	FRAME	1	
2	500M2105	LOWER DAMPER	1	
3	100M2106-4	SIDE DAMPER	10	
4	500M2103	GUIDE PLATE	2	
5	HB3035100	SIDE HEX BOLT	2	
6	SW30	SPRING WASHER	2	
7	HN3035	HEX NUT	2	
8	500M2109	COVER PLATE-A	1	
9	500M2109-1	COVER PLATE-B	1	
10	SW12	SPRING WASHER	8	
11	WB1217525	WRENCH BOLT	8	
12	PL007	GREASE PLUG	1	
13	PL005	STOP PIN PLUG	10	
14	PL012	ROD PIN PLUG	2	
15	PL018	ADAPTER PLUG	2	
16	PL020	IN/OUT PLUG	2	
17	500M2104	UPPER DAMPER	1	
18	500M2108	UPPER PLATE	1	
19	HB202590	HEX BOLT	12	
20	SW20	SPRING WASHER	12	
21	HN2025	HEX NUT	24	

RS900 Top Bracket



NO	PART NO	PART NAME	Q'YT
		FRAME ASSY	
1	500M3101	FRAME-R	1
2	500M3101-1	FRAME-L	1
3	HB3630300	HEX BOLT	6
4	SW36	SPRING WASHER	6
5	CN3630	CAP NUT	6
6	500M3102	MOUNT CAP	1
7	HB202590	M/C HEX BOLT	12

NO	PART NO	PART NAME	Q'YT
8	SW20	M/C SPRING WASHER	12
9	HN2025	M/C HEX NUT	24
10	500M3106	PIN	2
11	500M3106-1	T-BUSH	4
12	500M3106-2	STOP BAR	2
13	HB1620170	PIN HEX BOLT	2
14	HN1620	PIN HEX NUT	4

FORCE HAMMERS PTY LTD.

Address 64 Buckingham Drive, WANGARA, ABN 85 676555990
Mail PO Box 988, Joondalup DC, Perth Western Australia 6065

1300 820 603