

FORCE HAMMERS

RS800 SERIES

HYDRAULIC BREAKER

Technical Specification

TECHNICAL SPECIFICATION RS800

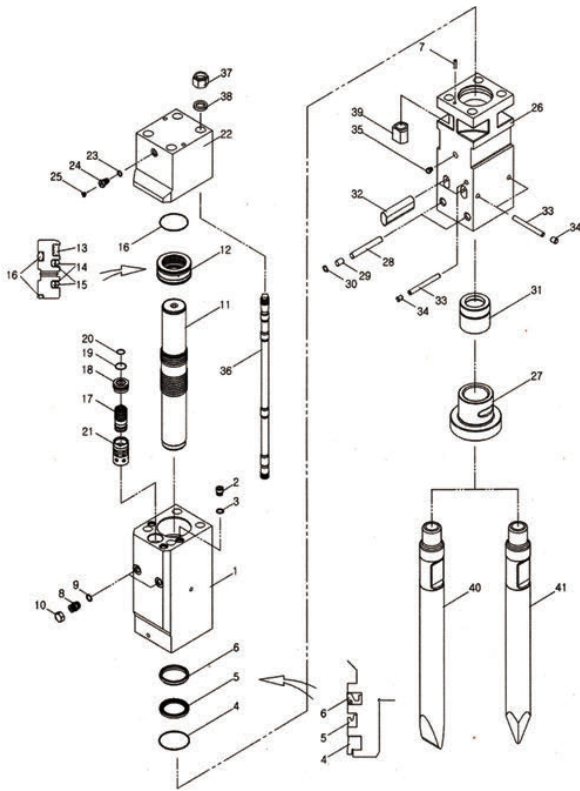
*Disclaimer: Please contact a Force representative for clarification on specifications and options. Force reserves the right to make changes to the information on this data sheet without prior notification to users.

Item/Model	Unit	RS800
Top Type Weight	kg	640
Box Type Weight	kg	730
Length	mm	2100
Pressure	bar	160-180
Flow	lpm	60-100
Rate	bmp	400-700
Hose	inch	3/4
Chisel	mm	85
Suit	ton	7-14



FORCE HAMMERS

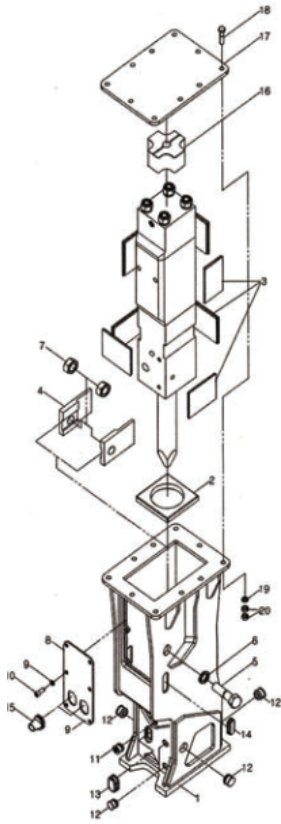
RS800 Main Body Ass'y



NO	PART NO	PART NAME	Q'YT	MEMO
		CYLINDER ASSY		
1	450M1102	CYLINDER	1	
2	450M1135	SOCKET PLUG	3	
3	OR046	O-RING	3	
4	DS006	DUST SEAL	1	
5	UP006	U-PACKING	1	
6	BS009	BUFFER SEAL	1	
7	400M1118	KNOCK PIN	1	
8	450M1125	MALE ADAPTER	2	
9	OR50	O-RING	2	
10	450M1125-1	UNION CAP	2	
11	450M1104	PISTON	1	
		SEAL RETAINER ASSY		
12	450M1108	SEAL RETAINER	1	
13	GS006	GAS SEAL	1	
14	SS006	STEP SEAL	2	
15	OR074	O-RING	2	
16	OR030	O-RING	3	
17	450M1106	VALVE	1	
18	450M1107	VALVE PLUG	1	
19	OR020	O-RING	1	
20	OR017	O-RING	1	
21	450M1105	VALVE SLEEVE	1	
		BACK HEAD ASSY		
22	450M1103	BACK HEAD	1	
23	OR046	O-RING	1	
24	100M1127	CHARGING VALVE	1	
25	100M1127-1	CHARGING VALVE PLUG	1	
		FRONT HEAD ASSY		
26	450M1101	FRONT HEAD	1	
27	450M1112	LOWER BUSH	1	
	450M1112-B	LOWER BUSH (BOX TYPE)	1	
28	430M1120	STOP PIN-L	2	
29	RP004	RUBBER PLUG-L	2	
30	SR020	SNAP RING	2	
31	450M1111	UPPER BUSH	1	
32	450M1119	ROD PIN	2	
33	450M1121	STOP PIN-UR	3	
34	RP001	RUBBER PLUG-UR	3	
35	100M1139	GREASE NIPPLE	1	
36	450M1114	THROUGH BOLT	4	
37	450M1115	HEX NUT	4	
38	450M1117	WASHER	4	
39	450M1116	ROUND NUT	4	
40	450M1113	WEDGE CHISEL	1	
41	450M1113-1	MOIL POINT TOOL	1	

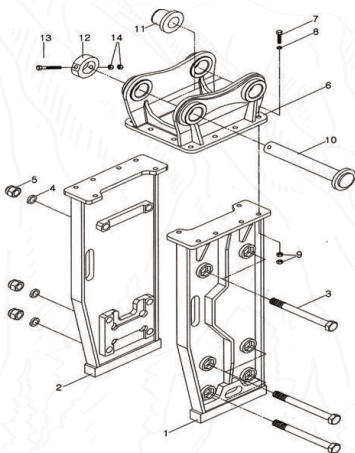
FORCE HAMMERS

RS800 Box Bracket



NO	PART NO	PART NAME	Q'YT	MEMO
		FRAME ASSY	1Set	
1	430M2101	FRAME	1	
2	430M2105	LOWER DAMPER	1	
3	100M2160-4	SIDE DAMPER	10	
4	450M2103	GUIDE PLATE	2	
5	HB3035100	SIDE HEX BOLT	2	
6	SW30	SPRING WASHER	2	
7	HN3035	HEX NUT	2	
8	450M2109	COVER PLATE-A	1	
9	2109-1	COVER PLATE-B	1	
10	SW12	SPRING WASHER	8	
11	WB1217525	WRENCH BOLT	8	
12	PL017	GREASE PLUG	1	
13	PL015	STOP PIN PLUG	10	
14	PL011	ROD PIN PLUG	2	
15	PL018	ADAPTER PLUG	2	
16	PL020	IN/OUT PLUG	2	
17	400M2105	UPPER DAMPER	1	
18	450M2108	UPPER PLATE	1	
19	HB202590	HEX BOLT	12	
20	SW20	SPRING WASHER	12	
21	HN2025	HEX NUT	24	

RS800 Top Bracket



NO	PART NO	PART NAME	Q'YT
		FRAME ASSY	
1	450M3101	FRAME-R	1
2	450M3101-1	FRAME-L	1
3	HB3020280	HEX BOLT	6
4	SW30	SPRING WASHER	6
5	CN3020	CAP NUT	6
6	450M3102	MOUNT CAP	1
7	HB202590	M/C HEX BOLT	12

NO	PART NO	PART NAME	Q'YT
8	SW20	M/C SPRING WASHER	12
9	HN2025	M/C HEX NUT	24
10	450M3106	PIN	2
11	450M3106-1	T-BUSH	4
12	450M3106-2	STOP BAR	2
13	HB12175130	PIN HEX BOLT	2
14	HN12175	PIN HEX NUT	4

FORCE HAMMERS PTY LTD.

Address 64 Buckingham Drive, WANGARA, ABN 85 676555990
Mail PO Box 988, Joondalup DC, Perth Western Australia 6065

1300 820 603